

Start a new eActivity file - tap **File, New** and then **OK** if prompted.

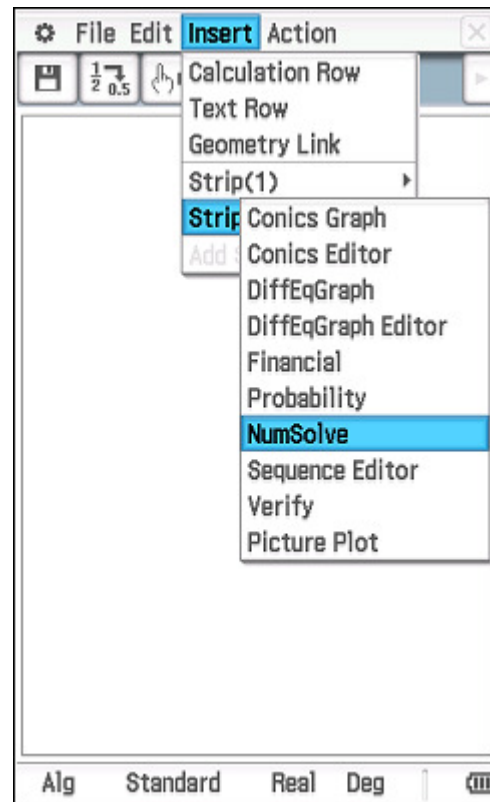
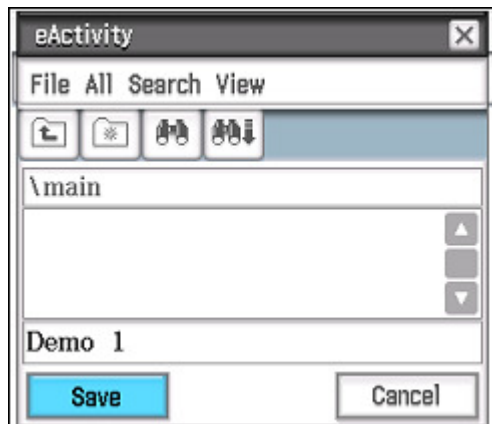
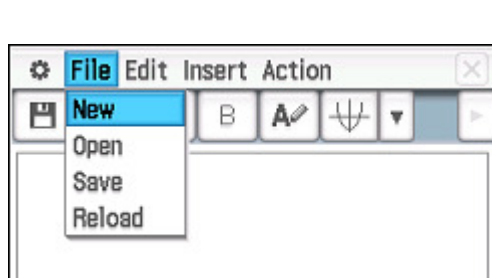
Save the eActivity - tap **File, Save**, choose or create a folder (can't save in the *Root Directory*), type in a name for the file and tap **Save**.

*eActivity file names can be up to 20 characters long.*

Repeat steps 1 to 4 to insert multiple equations.

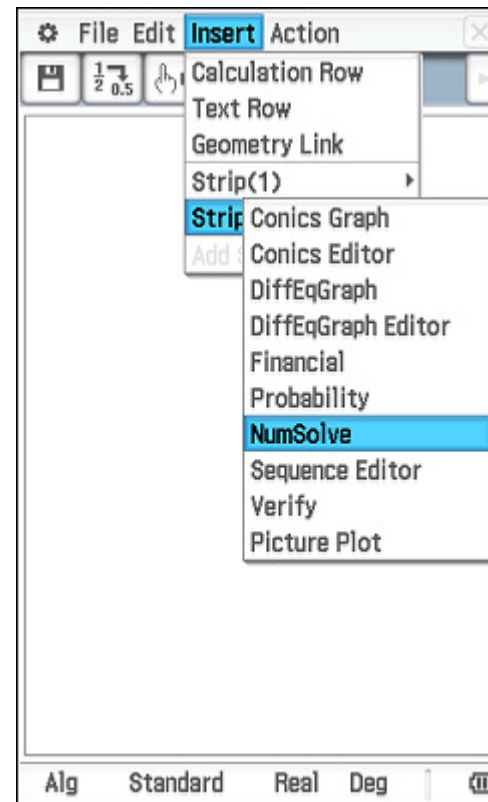
### 1. Insert a NumSolve strip

Tap **Insert, Strip(2), NumSolve**




### 2. Enter the formula

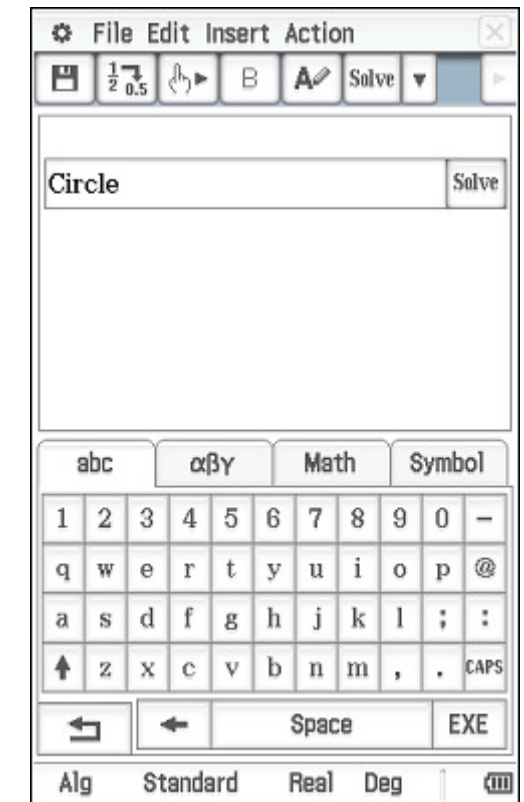
Type the formula in the equation box and tap EXE. Be sure to use the **Var** tab for single letter variables.



### 3. Type a name for the strip

Tap  to close the NumSolve strip.

Type a suitable name in the strip using the **abc** tab.



#### 4. Save the updated eActivity

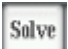
Tap **File, Save, Save** and confirm Overwrite with **OK**.


#### To use the eActivity

Tap **File, Open**, select the eActivity and tap **Open**.

Locate the desired strip and tap on **Solve** at the right side of the strip.

For example, to find the radius of a circle of circumference 50 cm, type  $C=50$  and tap on  $r$  (the variable to solve for).

Then tap  at the top left of the screen.

To close a strip, tap .

eActivities can contain dozens of NumSolve strips.

