

Classpad Help Series sponsored by Casio Education Australia		www.casioed.net.au	
981	Ending Screens	Author	Charlie Watson
		Date	15 March 2011
		CPM OS	03.05.0000

What is an Ending Screen? It's the picture that briefly flashes onto the screen when you turn your hand held ClassPad off.

The default image is shown at right.

If you create a 2-colour (ie black and white) image of width 160 and height 240 pixels, then this image can be set as your personalised Ending Screen.

Two ways of making screens are explained in another Help Series article.

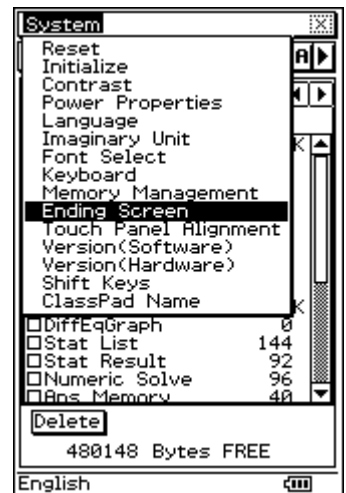
A selection of pictures can also be downloaded from www.charliewatson.com/classpad.

This article explains how to set an existing picture on your hand held as the ending screen.

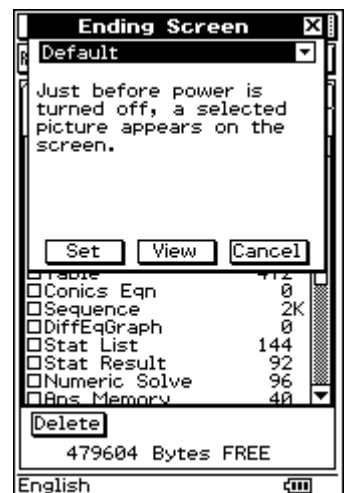


From the Menu, start the **System** application.

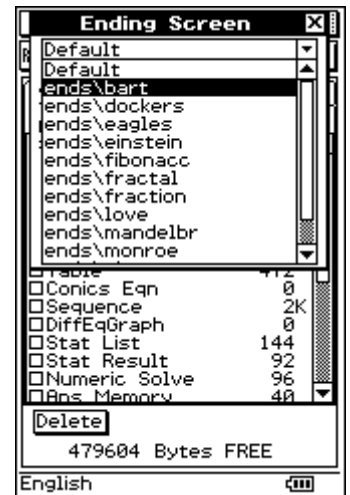
Tap **System, Ending Screen**.



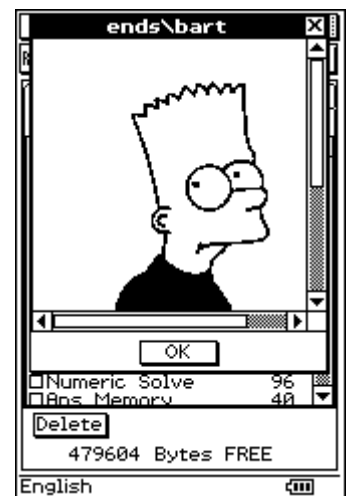
The **Ending Screen** window opens.



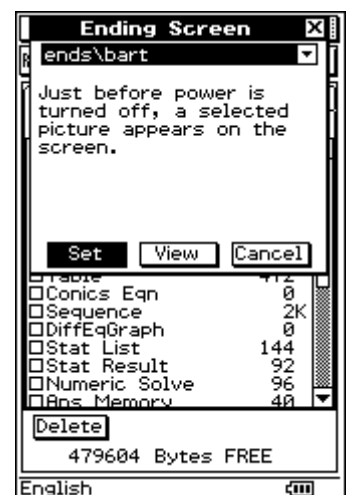
Use the drop down menu to choose the required picture.



You can tap **View** to preview the picture.



Tap **Set** to confirm your choice.



Press the ON/OFF key to turn off your Classpad and test your picture.