

Classpad Help Series sponsored by Casio Education Australia		www.casioed.net.au	
672	Average Rate Of Change Of Function	Author	Charlie Watson
		Date	31 January 2010
		CPM OS	03.04.4000

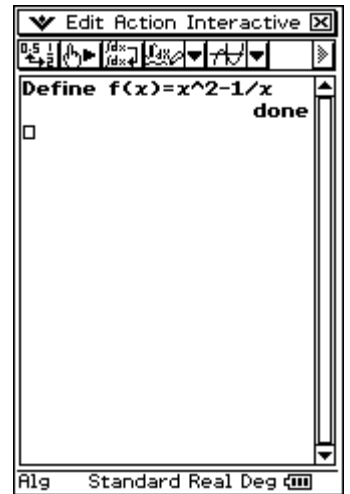
Start in eActivity.

This eActivity contains a Main strip which can easily be re-used to calculate the average rate of change for most functions.

Example: Determine the average rate of change of $x^2 - \frac{1}{x}$ when x changes from 2.5 to 3.

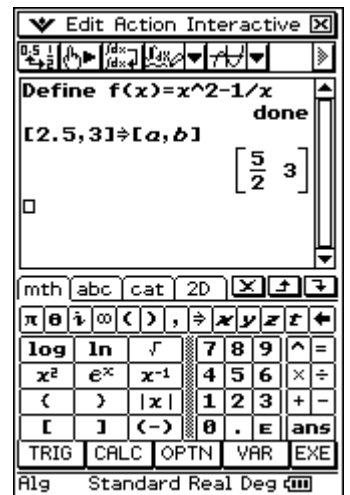
Tap **Insert, Strip, Main** and then **Resize**.

Define the function as $f(x)$.

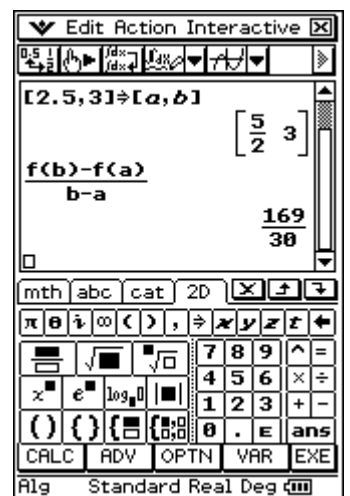


Open the keyboard and tap on the **mth** tab.

Next store the start and end values for the variable as shown.

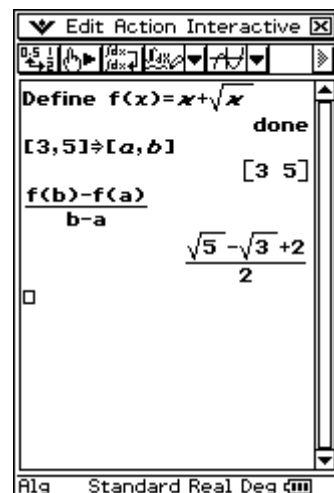


Now create the average rate of change expression and tap **EXE**.



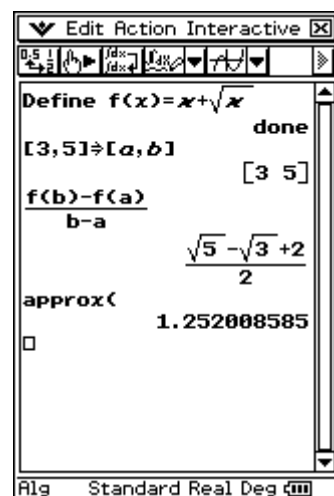
To use the strip for another problem, simply modify the definition of $f(x)$, the start and end values and tap **EXE**.

The display is completely updated and you can see the basic steps in calculating the average rate of change.



You could choose to add **approx** at the end of the expression to automatically calculate a decimal approximation to the exact value.

Tap **Action, Transformation, approx** and then **EXE**.



Close the strip, enter a suitable title for it and save the eActivity.

