

Start in Graph and Table.

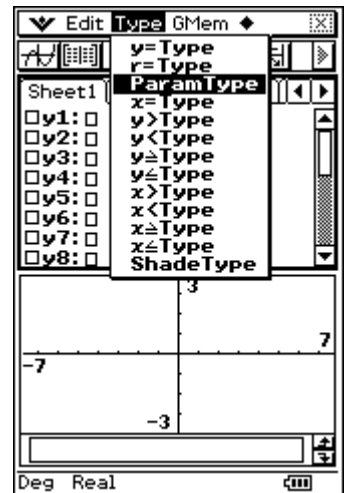
Tap into the bottom window.

Tap **Edit, Clear All**.

Tap into the top window.

Tap **Edit, Clear All**.

Tap **Type, ParamType**.

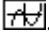


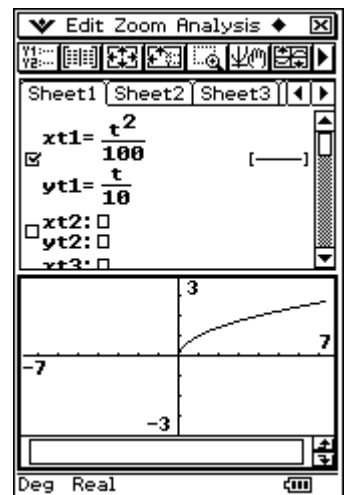
Graph  $x = \frac{t^2}{100}, y = \frac{t}{10}$ .

Open the keyboard.

Enter the  $x$ -part and tap **EXE**.

Enter the  $y$ -part and tap **EXE**.

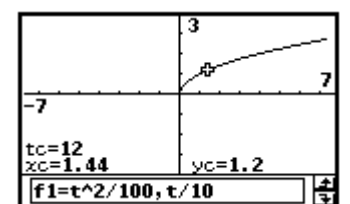
Tap .

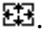


Tap **Analysis, Trace**.

Tap the left and right cursor keys.

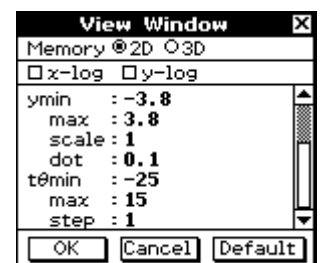
Note how the parameter  $t$  is incrementing in steps of 3, starting from 0.



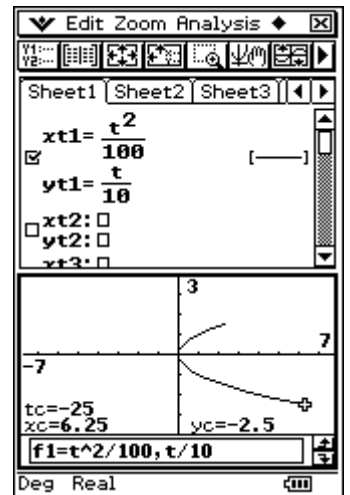
Tap .

Scroll to the bottom of the list of settings and adjust the  $t$  minimum, maximum and step as shown.

Tap **OK**.

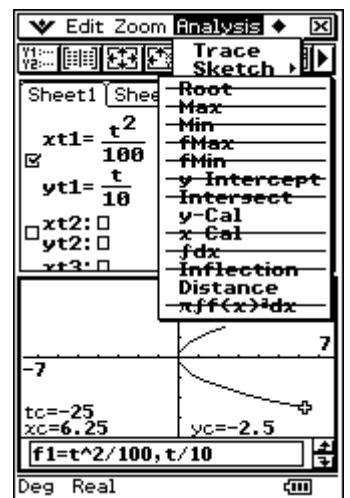


The graph is re-drawn with the new settings.



Tap Analysis, G-Solve.

Note that with parametric functions, most tools are disabled.



Tap Analysis, Sketch.

Most of the sketch functions are still available.

