


Classpad Help Series sponsored by Casio Education Australia		www.casioed.net.au	
203	Solving Linear Inequalities	Author	Monty Campbell
		Date	1 Jan 2008
		CPM OS	03.01.3000.0240

Solving a Linear Inequality


Solve the linear inequality $3 - 4x > 9$ (Interactive step by step method)

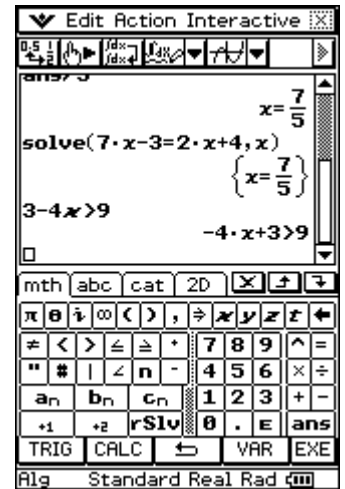
Tap the Main screen icon  Main

Press **Keyboard**.

Enter $3 - 4x > 9$

Press or tap **EXE**.

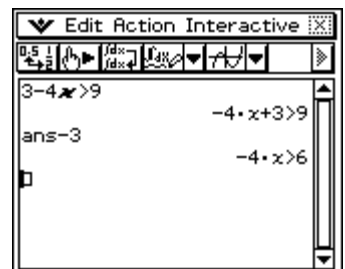
NOTE: the **greater than** symbol $>$ can be found in  **OPTN**



Now we can subtract 3 from both sides.

Enter -3

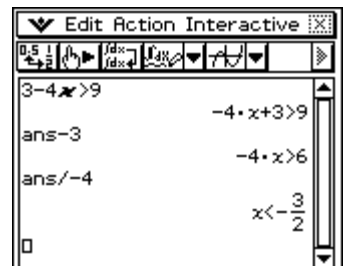
Then press or tap **EXE**




We could then consider dividing both sides by -4.

Enter $\div (-) 4$

This yields the correct solution $x < -\frac{3}{2}$!!



Solve the linear inequality $3 - 4x > 9$ (Using the Solve command)

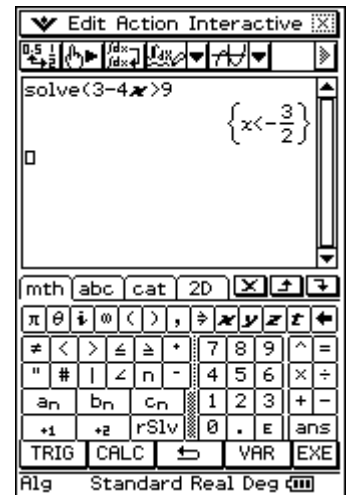
Tap the Main screen icon  Main

Press **Keyboard**.

Either

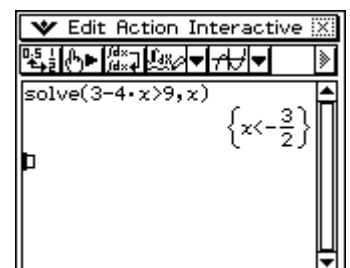
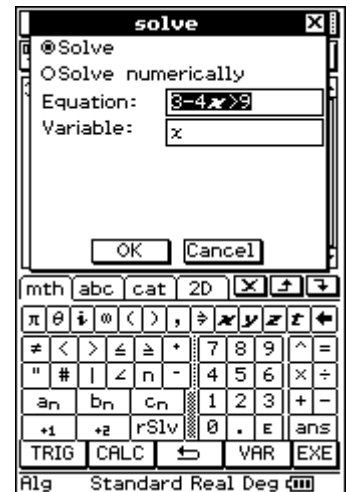
Tap **Action, Equation/Inequality, solve**
 Enter $3 - 4x > 9$
 Press or tap **EXE**

NOTE: x is the default variable



or

Enter $3 - 4x > 9$
 Select the entire inequality
 Tap **Interactive, Equation/Inequality, solve**
 Tap **OK**



As a variation, if we enter $x + 2 > x$ we obtain ANY real solution.

If we enter $x + 2 > x + 3$ we obtain NO real solution.

