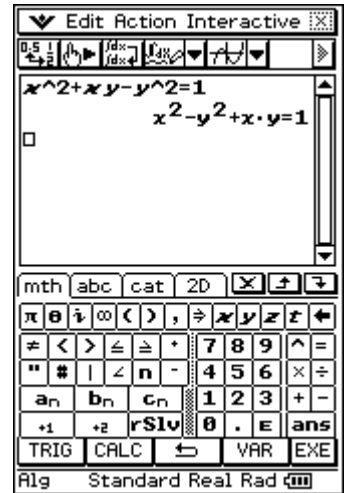


Classpad Help Series sponsored by Casio Education Australia		www.casioed.net.au	
171	Implicit Differentiation	Author	Charlie Watson
		Date	31 January 2010
		CPM OS	03.04.4000

Start in Main.

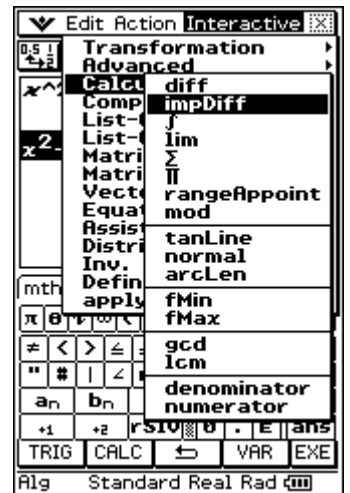
Find the gradient of $x^2 + xy - y^2 = 1$ at the point (1, 0).

Enter the implicit function and tap **EXE**.



Select the function.

Tap **Interactive**, **Calculate**, **impDiff**.

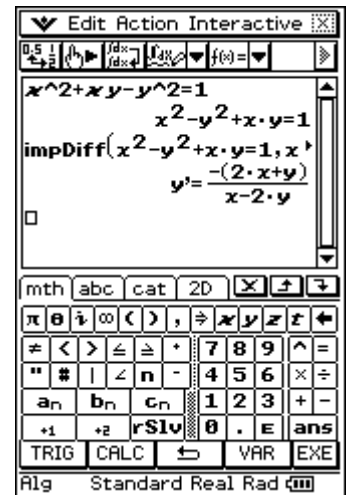


The **impDiff** box opens.

Check the settings are correct and tap **OK**.



An equation for the derivative is displayed.



Copy the right-hand side of the equation onto a new line.

Tap onto the **mth** tab, tap **OPTN** and add the values for x and y .

The value of the derivative at this point is calculated.

